

THE NEW AUTOMATIC ELECTRICITY METER WORKS LIKE THIS:



DISPLAY: Shows meter reading (kWh).

HAN PORT: For smart home devices and external displays. Please contact your grid operator before obtaining any smart home devices, to check whether your meter is ready for connection to such devices.

ENERGY PULSE: The red light flashes faster or slower to indicate the level of power consumption.

For installer use:

M-BUS: Connector for metering of e.g. hot water (not normally in use).

ENERGY PULSE REACTIVE POWER: Reactive power occurs when current and voltage are out of phase (putting a load on the grid), e.g. large motors that use a lot of power to start up.

Private customers do not pay for this, only large business customers.



STATUS INDICATOR FOR COMMUNICATIONS (LED):

Blue and green flashing lights indicate that the meter's communications are functioning.

WARNING: The meter must never be used to disconnect the power when performing electrical work.

DISPLAY BUTTON: Switch to disconnect the power and to scroll through the information saved in the meter (the information is shown on the display).

For installer use:

SEAL BUTTON (M-BUS):

To be opened by the installer if it is necessary to measure devices other than the power supply (not normally in use).

For installer use:

IR PORT: For use when updating software etc.

METER NUMBER

THE ORANGE DISPLAY BUTTON

By pressing the orange display button you can read various information on the display. Repeated presses of the button will scroll through a menu of information.



WHAT DO THE CODES MEAN?

The numerical codes in the top left-hand corner of the display indicate what measured data is being displayed.

- The information and the order in which it is shown is the same for all private customers.
- You will automatically return to the standard display after a few seconds if you do not press the button. The display then shows the meter reading.



1.8.0:
The meter reading you are used to from the "old" meters.



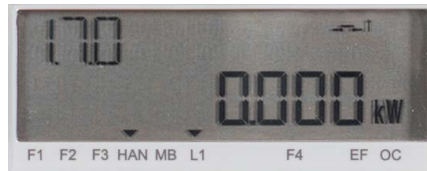
2.8.0:
Meter reading for Plus Customers*. The "old" meters were unable to show this.



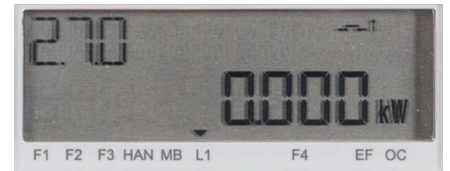
3.8.0:
Reactive power occurs when current and voltage are out of phase, e.g. large motors that use a lot of power to start up. Private customers do not pay for this, only large business customers.



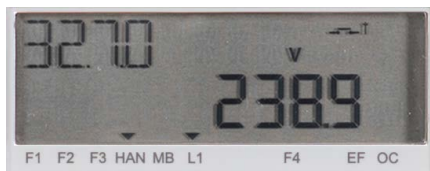
4.8.0:
Reactive power – Plus Customers*.



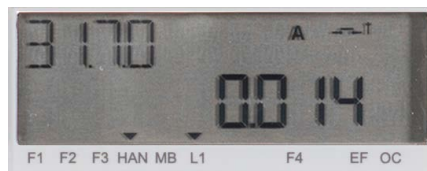
1.7.0: Power – displays how much electricity you are currently using (measured in kW).



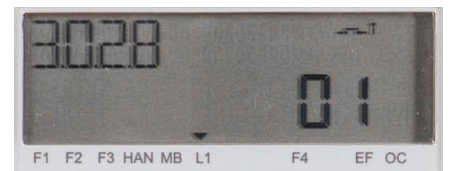
2.7.0: Power, Plus Customers – displays how much electricity the Plus Customer is currently supplying to the grid (measured in kW).



32.7.0: Volts – displays the electrical voltage of the installation.



31.7.0: Amperes – displays the electrical current of the installation.



30.2.8:
HAN port version number.



99.1.0:
Historical hourly values. The current date will be displayed here. Keep the button pressed until the display changes. After that, each time you press the button you will step one hour back in time and see the consumption for that hour.

* **What is a Plus Customer?** A Plus Customer is a customer who produces electricity for their own use (e.g. from solar panels) and supplies any excess electricity to the grid.

HOW TO DISCONNECT OR RECONNECT THE POWER



DISCONNECTING THE POWER:



- If you press the orange display button once, the text below appears on the display.
- The power will be disconnected if you keep the orange button pressed for more than 6 seconds until you hear a click.

RECONNECTING THE POWER:



- If the power has been disconnected, the text below appears on the display.
- The power can be reconnected in the same way as disconnecting it: keep the orange button pressed for more than 6 seconds until you hear a click.

YOU CAN USE THE SWITCH IN THE FOLLOWING CASES:

- When moving home (although you still have to contact us to notify us that you are moving).
- When disconnecting power in your home or holiday home, instead of disconnecting it at the fuse box.

If you use the switch, the grid operator can maintain contact with your meter. This will allow the grid operator to check that the power supply to your home is intact.

NB: The switch must never be used to disconnect power when carrying out electrical work in your home. In such situations, you must disconnect the power at the fuse box, as was previously the case.

THE GRID OPERATOR CAN USE THE SWITCH IN THE FOLLOWING CASES:

- To disconnect power in case of non-payment (instead of having to send out an installer). **NB:** Customers who have not paid will receive repeated reminders as usual before their power is cut off.